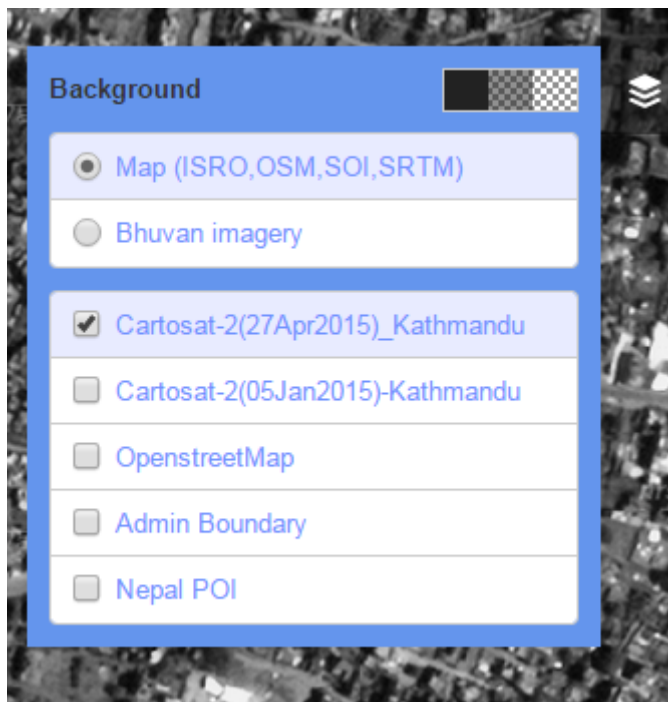
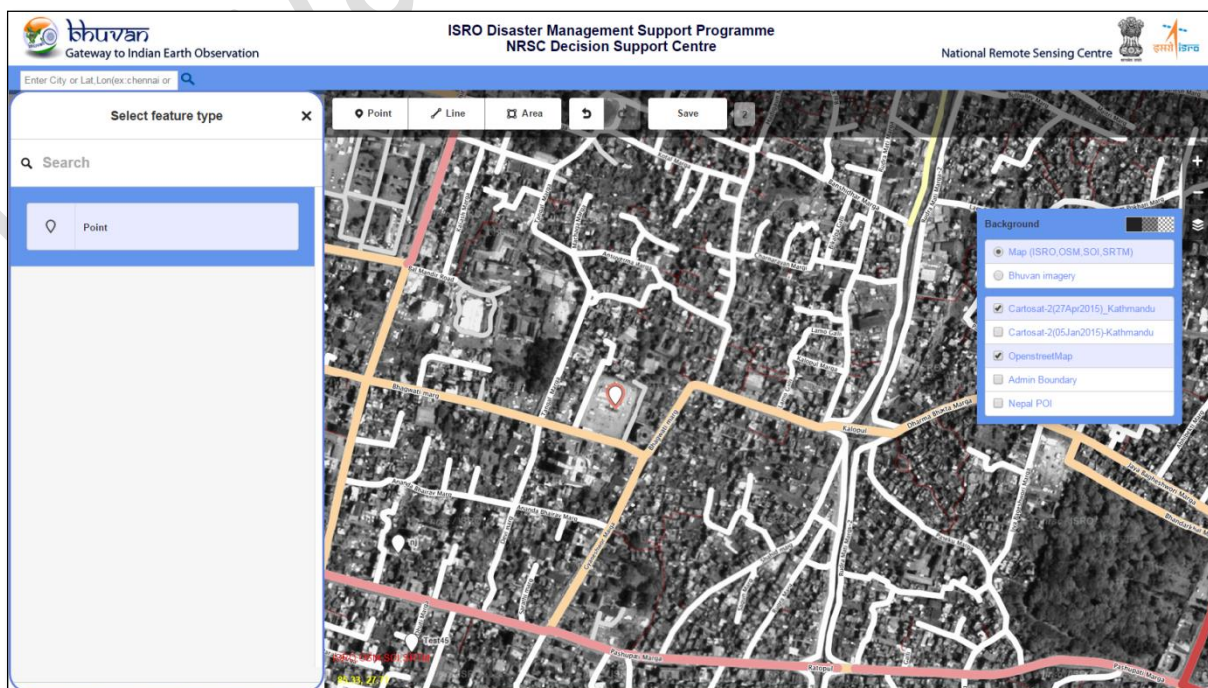


Nepal Earthquake

- Go to your place of interest to assess the damage.
- After certain zoom level (say 16), the application enables tools to add/edit the damaged features.
- Check Pre/Post events, Openstreetmap(Road Layer) for better assessment of damage under Background Layer.



- To add new feature, select corresponding tool (point/line/area) and click on the map to digitize the feature.



- Select the category from the left side panel and fill the attribute details (Name, Damage assessment along with Description) of damaged feature.

The screenshot shows a mobile application interface for digitizing damaged features. The form is titled "Point" and contains the following sections:

- Name:** A text input field with the placeholder "Common name (if any)".
- Damage Assessment:** Three radio button options: "Fully Damaged", "Partially Damaged", and "Not Damaged". A "Remove" button is also present.
- Description:** A text input field with the placeholder "Description (if any)".

At the bottom of the form, there is a navigation bar with icons for envelope, double arrows, document, mobile phone, information, and laptop.

- Click on 'Save' button to Save the features after completion of your Digitization.

For updates related to Nepal Earthquake, Visit <http://bhuvan-noeda.nrsc.gov.in/disaster>

For Bhuvan services related queries , email to bhuvan@nrsc.gov.in